

Lower lymphocyte to monocyte ratio is a potential predictor of poor outcome in patients with cerebral venous sinus thrombosis

Shen Li,¹ Kai Liu,¹ Rui Zhang,¹ Yuan Gao,¹ Hui Fang,¹ Xinjing Liu,¹ Lulu Pei,¹ L-Ying Richard Chou,² Sheng Guan,¹ Xinbin Guo,¹ Haowen Xu,¹ Bo Song,¹ Yuming Xu¹

To cite: Li S, Liu K, Zhang R, et al. Lower lymphocyte to monocyte ratio is a potential predictor of poor outcome in patients with cerebral venous sinus thrombosis. *Stroke and Vascular Neurology* 2018;**0**: e000180. doi:10.1136/svn-2018-000180

SL and KL contributed equally.

Received 18 July 2018

Revised 15 September 2018

Accepted 9 October 2018

ABSTRACT

Background Lymphocyte to monocyte ratio (LMR) is associated with functional outcome in patients with stroke. But the relationship between the LMR value and the prognosis of cerebral venous sinus thrombosis (CVST) has not been investigated.

Methods CVST patients, admitted to the First Affiliated Hospital of Zhengzhou University, were retrospectively identified from November 2010 to January 2017.

Functional outcomes of patients were evaluated with the modified Rankin Scale (mRS). Patients were divided into good (mRS 0–2) and poor (mRS 3–6) outcomes groups. Univariate and multivariate Cox regression analyses were used to assess the relationship between LMR and the poor survival outcome.

Results A total of 228 patients were included of which 41 had poor outcomes (18.0%). The duration of follow-up was 22 months (6–66 months). LMR (2.3 ± 1.2 vs 3.2 ± 1.8 , $p < 0.01$) was significantly lower in the poor outcome group. Multivariate Cox regression analysis showed that LMR (HR 0.726, 95% CI 0.546 to 0.964, $p = 0.027$) was an independent predictor of poor prognosis.

Conclusions LMR may be a predictor of poor prognosis in CVST patients.

INTRODUCTION

Cerebral venous sinus thrombosis (CVST) is a rare type of stroke, accounting for 0.5%–1% of all strokes.¹ According to previous studies, the incidence of CVST was 3–4 cases per million population,² but more recent studies have shown that the incidence of CVST is higher than expected and may be as high as 1.32–1.57 per 100 000 person-years.^{3–4} The clinical presentation and prognostic factors of CVST vary widely. The use of the CVST prognostic score based on the International Study on Cerebral Vein and Dural Sinus Thrombosis (ISCVT) is widely accepted,⁵ because it accounts for multiple variables including: male gender, coma, malignancy, intracranial haemorrhage, mental status disturbance and thrombosis of the deep venous system. Inflammation plays an important role in the

risk of CVST and the inflammation response activated by brain lesion is regarded as a fatal role provoking secondary brain injury.⁶ Some inflammatory factors, such as platelet to lymphocyte ratio (PLR),⁷ neutrophil to lymphocyte ratio (NLR),⁸ C reactive protein (CRP)⁹ and d-dimer,^{10–11} have been identified through the study of CVST.

Lymphocytes, subtypes of leucocytes, play an important role in the postischaemic inflammation.¹² Monocytes also have a pivotal role in the systemic inflammatory response, having been traditionally considered to differentiate into three major subtypes in humans and to exert diverse effects in postischaemic pathology.¹³ Lately, the lymphocyte to monocyte ratio (LMR), relatively more stable than single blood parameters, a reduction in lymphocytes could contribute to a poor outcome in patients with acute ischaemic stroke.¹⁴ LMR has been reported to be an effective prognostic determinant in various entities such as malignancy,^{15–16} cardiovascular disease^{17–18} and stroke.^{19–20}

In this retrospective study, we aim to analyse the association between LMR admission values and outcomes in patients with CVST.

METHODS

Patient selection

Patients included in this retrospective cohort study were from the database of the Henan CVST Registry in the First Affiliated Hospital of Zhengzhou University (Henan, China). All patients diagnosed with CVST from November 2011 to January 2017 were identified. Inclusion criteria were as follows: (1) meeting the diagnostic criteria for CVST established by the American Heart Association/American Stroke Association in 2011²¹; (2) patients with direct or indirect signs of CVST in the MRI; (3) filling defect or obstruction of cerebral sinus in the magnetic resonance venography,



© Author(s) (or their employer(s)) 2018. Re-use permitted under CC BY-NC. No commercial re-use. See rights and permissions. Published by BMJ.

¹Department of Neurology, First Affiliated Hospital of Zhengzhou University, Zhengzhou, China

²Cardio-Neurology Clinic and Clinical Proteomics Research Center and Neuroprotection Research Laboratory, Massachusetts General Hospital and Harvard Medical School, Boston, Massachusetts, USA

Correspondence to

Professor Yuming Xu; xuyuming@zzu.edu.cn

digital subtraction angiography or operation searching; (4) clinical features such as isolated headache, vomiting, visual disturbances, focal neurological deficit, seizure and other typical symptoms and (5) an initial blood sample for laboratory testing 12 hours of admission. Exclusion criteria were as follows: (1) patients with unrelated other serious brain lesions, serious lung disease or heart disease; (2) patients with undesirable follow-up, including refusal or loss to follow-up; (3) patients less than 18 years old and (4) patients without complete clinical data.

Data collection

Clinical data such as age, gender, onset to admission time, potential risk factors, clinical presentation, laboratory and

imaging tests were collected. Laboratory samples were routinely collected after 12 hours of fasting on admission to the hospital. The inter-rater reliability for involvement of intracranial venous sinus between two investigators was assessed in some cases.

Evaluation of prognosis

We evaluated the modified Rankin Scale (mRS) to determine the patients' functional outcomes: mRS 0–2 as good outcomes, mRS 3–6 as poor outcomes and death was defined with mRS score of 6. Follow-up information was recorded by telephone interview. Telephone interviewers were not involved in the registry and were blinded to the

Table 1 Demographic and clinical characteristics of the two outcomes groups in CVST patients

Variable	Total	Good (187, 82.0%)	Poor (41, 18.0%)	P values
Age	35.2±13.2	33.8±12.7	41.9±13.8	0.001*
Gender	228	187	41	0.505
Female	134	108	26	
Male	94	79	15	
From onset to admission time	78.9±333.3	78.0±358.4	83.4±182.4	>0.1
Malignancy	8	5	3	0.143
Infection	71	57	14	0.854
Pregnancy or puerperium	45	39	6	0.516
Haematological diseases	8	6	2	0.637
Rheumatic diseases	2	1	1	0.328
Renal disease	4	3	1	0.550
Fatigue	15	15	0	0.079
Trauma	6	5	1	0.932
Intracerebral haemorrhage	37	23	14	0.001*
Epilepsy	44	35	9	0.635
Dyskinesia and sensory disturbance	35	27	8	0.414
Coma	41	23	18	<0.01*
Barylalia	7	6	1	0.796
Isolated headache	26	24	2	0.147
Intracranial hypertension	166	135	31	0.656
Lymphocyte	1.6±0.6	1.7±0.7	1.1±0.4	<0.01*
Monocyte	0.7±0.3	0.6±0.3	0.6±0.3	0.788
LMR	3.1±1.7	3.2±1.8	2.3±1.2	<0.01*
D-dimer	2.0±4.8	1.5±2.4	4.1±9.8	0.001*
Left sigmoid sinus	71	61	10	0.303
Right sigmoid sinus	75	64	11	0.361
Left transverse sinus	97	78	19	0.587
Right transverse sinus	97	80	17	0.877
Straight sinus	50	31	19	<0.01*
Superior sagittal sinus	149	123	26	0.774
Inferior sagittal sinus	25	17	8	0.053
Venous	26	17	9	0.019*

*Statistically significant.

CVST, cerebral venous sinus thrombosis; LMR, lymphocyte to monocyte ratio.

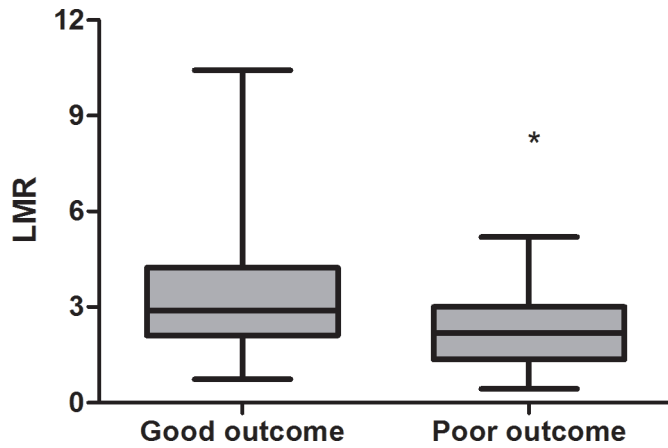


Figure 1 Comparison of LMR between good outcome and poor outcome in CVST patients (*Statistically significant). CVST, cerebral venous sinus thrombosis; LMR, lymphocyte to monocyte ratio.

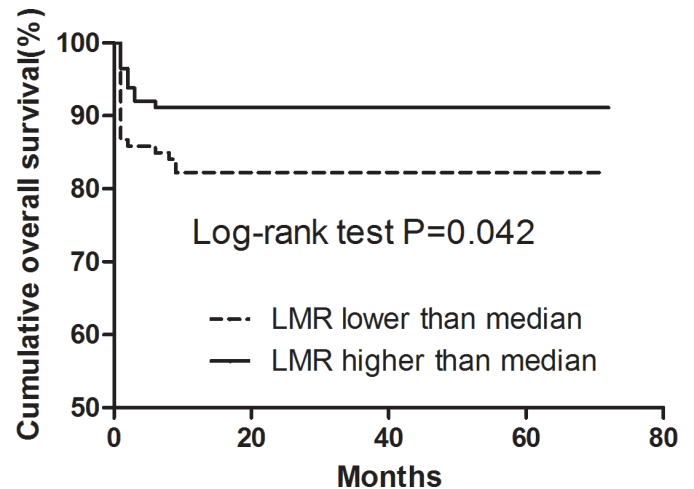


Figure 2 Kaplan-Meier survival analysis and log-rank t-test for CVST patients with high/low LMR. CVST, cerebral venous sinus thrombosis; LMR, lymphocyte to monocyte ratio.

baseline data. The overall survival (OS) time was defined as the date of admission to the date of death from any cause or to the last follow-up date.

Statistical analysis

All statistical analyses were performed using SPSS V.19.0 software. Continuous variables were expressed as mean \pm SD or median which were analysed by independent Student's t-test or Mann-Whitney U test, as appropriate. Categorical variables were presented as numbers which were analysed using χ^2 test or Fisher's exact test. Survival curves were described by the Kaplan-Meier method and compared with the log-rank test. The association between LMR and the poor survival outcome was explored by using multivariate Cox regression analysis. Two-tailed p values of <0.05 were considered significant.

RESULTS

There were 263 patients with confirmed CVST admitted during the study period. We excluded 20 patients because of incomplete clinical data, 10 patients because they were lost to follow-up and 5 patients because they were younger than 18 years old. A total of 228 CVST patients were enrolled into this study.

The duration of follow-up was 22 months (6–66 months) and 41 patients were defined as having poor outcomes. The baseline clinical data of two groups are shown in [table 1](#). LMR (2.3 \pm 1.2 vs 3.2 \pm 1.8, $p<0.01$) was significantly lower in the poor outcome group as illustrated in [figure 1](#). However, there were no significant differences between the two groups with respect to gender ($p=0.505$), onset to admission time ($p>0.1$), malignancy ($p=0.143$), infection ($p=0.854$), epilepsy ($p=0.635$), dyskinesia and sensory disturbance ($p=0.414$), barylalia ($p=0.796$), isolated headache ($p=0.147$) and intracranial hypertension ($p=0.656$). But older patients were identified more frequently in the poor outcome group than in the good outcome group (41.9 \pm 13.8 vs

33.8 \pm 12.7, $p=0.001$). In addition, intracerebral haemorrhage and coma were more common among patients with poor outcomes ($p=0.001$ and $p<0.01$). As for laboratory parameters, lymphocyte and d-dimer reached statistical significance ($p<0.01$ and $p=0.001$), but not monocyte ($p=0.788$). Additionally, the thrombosis-affected sinuses were also regarded as risk factors. Straight sinus and deep venous were involved in the poor outcome group ($p<0.01$ and $p=0.019$).

Kaplan-Meier analysis and the log-rank test were used to determine the prognostic significance of LMR. It was observed that patients with high LMR presented significantly higher OS ($p=0.042$, [figure 2](#)) than those with low LMR. Variables in [table 2](#), univariate Cox regression analysis showed that LMR (HR 0.628, 95% CI 0.461 to 0.857, $p=0.003$), age (HR 1.046, 95% CI 1.020 to 1.072, $p<0.001$), intracerebral haemorrhage (HR 2.765, 95% CI 1.294 to 5.910, $p=0.009$), coma (HR 5.059, 95% CI 2.470 to 10.362, $p<0.001$) and straight sinus (HR 4.249, 95% CI 2.072 to 8.710, $p<0.001$) contributed significantly to poor OS.

Based on large ISCVT cohort study⁵ and the results of our univariate Cox regression analysis, multivariate Cox regression analysis demonstrated that LMR (HR 0.726, 95% CI 0.547 to 0.963, $p=0.026$) was a predictor of outcome, after adjusting for age, gender, coma, intracerebral haemorrhage, straight sinus ([table 3](#)).

DISCUSSION

Our study investigated the association between LMR and the outcomes in CVST patients. The major findings of our study were as follows: (1) lower value of LMR at admission was independently and strongly related to the outcomes of patients with CVST. (2) LMR was also demonstrated as a potential independent predictor of outcomes in patients with CVST.

The basis of sinus venous thrombosis can be linked to Virchow's triad, which includes injury to the vessel

Table 2 Univariate analysis of the overall survival in CVST patients

Variable	HR	95% CI	P values
Age	1.046	1.020 to 1.072	<0.001*
Gender	0.707	0.472 to 1.060	0.093
From onset to admission time(t)	0.999	0.996 to 1.002	0.530
Malignancy	3.142	0.952 to 10.366	0.060
Infection	1.293	0.616 to 2.718	0.497
Pregnancy or puerperium	0.605	0.211 to 1.734	0.350
Haematological diseases	2.087	0.497 to 8.766	0.315
Trauma	1.444	0.197 to 10.599	0.718
Intracerebral haemorrhage	2.765	1.294 to 5.910	0.009*
Epilepsy	1.324	0.568 to 3.087	0.515
Dyskinesia and sensory disturbance	1.391	0.569 to 3.404	0.469
Coma	5.059	2.470 to 10.362	<0.001*
Barylalia	1.068	0.145 to 7.840	0.948
Isolated headache	0.041	0 to 5.033	0.193
Intracranial hypertension	1.538	0.629 to 3.764	0.345
LMR	0.628	0.461 to 0.857	0.003*
D-dimer	1.030	0.990 to 1.072	0.141
Left sigmoid sinus	0.429	0.164 to 1.122	0.084
Right sigmoid sinus	0.731	0.325 to 1.641	0.447
Left transverse sinus	1.040	0.505 to 2.142	0.914
Right transverse sinus	1.194	0.583 to 2.447	0.627
Straight sinus	4.249	2.072 to 8.710	<0.001*
Superior sagittal sinus	1.264	0.579 to 2.761	0.556
Inferior sagittal sinus	1.261	0.440 to 3.613	0.666
Venous	1.541	0.590 to 4.025	0.377

*Statistically significant.

CVST, cerebral venous sinus thrombosis; LMR, lymphocyte to monocyte ratio.

walls, a hypercoagulable state and stasis.²² Up to now, recognised predisposing risk factors for thrombosis are known to include inflammation,²³ and infection likely adds additional patient risk in addition to the risk of CVST.²⁴ Pathophysiological mechanisms that specifically drive thrombosis during infection have not yet been fully elucidated, but inflammation has been regarded as one of the causes of the hypercoagulable state.^{25,26} At the same time, inflammation also plays an important role in stroke. It was discovered in an animal model that stroke-induced immunosuppression could result in lymphopenia, shift in Th1/Th2 (helper T cell 1/ helper T cell 2) ratio and monocyte deactivation.^{27,28} In human studies, lymphopenia and monocyte deactivation were also observed in

Table 3 Multivariate analysis of the overall survival in CVST patients

Variable	HR	95% CI	P values
Age	1.055	1.027 to 1.083	<0.001*
Gender	0.664	0.434 to 1.015	0.059
Coma	2.840	1.250 to 6.451	0.013*
Intracerebral haemorrhage	1.699	0.770 to 3.752	0.189
LMR	0.726	0.547 to 0.963	0.026*
Straight sinus	2.485	1.142 to 5.409	0.022*

*Statistically significant.

CVST, cerebral venous sinus thrombosis; LMR, lymphocyte to monocyte ratio.

peripheral blood after stroke, especially during the acute phase of ischaemic stroke.^{29,30} And LMR, as a new thromboinflammatory marker,¹⁵ was relatively more stable than single blood parameters, therefore, it may be more valuable than lymphocyte or monocyte counts alone in the prediction of various diseases including cardiovascular and cerebrovascular diseases and malignancy.^{15,16} Therefore, we have reason to believe that LMR of peripheral blood and CVST are somehow linked.

Research has shown that a lower LMR on admission was independently associated with severe stroke and 3-month poor outcome in patients with acute ischaemic stroke.¹⁹ Studies revealed that LMR has been associated with adverse prognosis in multiple malignancies.^{31,32} To our knowledge, low LMR has been closely correlated with the severity of coronary artery disease and has been regarded as a risk factor for atherosclerosis.¹⁷ Similarly, a decreased LMR has been independently linked to long-term mortality in patients with ST-segment elevation myocardial infarction who underwent primary percutaneous coronary intervention.¹⁸ Several authors have suggested that LMR might serve as an independent prognostic marker of survival in patients with cancer.^{33–35} Our data indicated that LMR is a prognostic marker in CVST.

CVST can presents as a wide range of neurological signs and symptoms, and has high morbidity and mortality. The prognosis of CVST is difficult to identify due to its complex and non-specific clinical findings. Out of the many prediction models for CVST, the CVST prognostic score based on ISCVST is most commonly accepted. A meta-analysis of several recent prospective series, particularly the large ISCVT cohort,⁵ found that the long-term predictors of a poor prognosis for all CVST patients, include males, CNS (Central Nervous System) infection, any type of cancer, deep venous system thrombosis, ICH (Intracerebral Hemorrhage), a Glasgow Coma Scale score on admission of less than 9, seizure, age older than 37 years and male gender. One study confirmed this view using the CVST prognostic scored based on ISCVST, contrary to previous models that did not show the value of prediction in the different cohort study.³⁶ In recent years, few studies have investigated the application of

PLR and NLR in CVST. And some simple and inexpensive tests, such as d-dimer, CRP, red cell distribution width and mean platelet volume, provided important data regarding the prognosis of CVST.

There were several limitations in our study. First, the study was a single centre and selection bias was unavoidable. Additional well-designed and larger prospective cohort multicentre studies are required to evaluate this association. Second, LMR was only collected once, thus, there was a lack of dynamic data. Finally, the exact mechanism of LMR associated with functional outcome could not be confirmed. Further experimental evidence is required to evaluate potential pathways.

CONCLUSION

In summary, our findings suggested that LMR was significantly lower in the poor function outcome group. Lower LMR value may be significantly related to the poor outcome of patients with CVST.

Acknowledgements We thank YX and BS for being advisers in study design and interpretation. SL and KL for drafting the article. LP, SG, XG and HX for data collection. RZ, YG, HF and XL for data analysis. L-YC for revising the article.

Contributors SL and KL are joint first authors. YX and BS provided funding and designed the study. LP, SG, XG and HX collected the data. RZ, YG, HF and XL were involved in data cleaning, follow-up and verification. L-YC revised the article. All authors have read and approved the final manuscript.

Funding This work was supported by the Science and Technology Department of the Henan Province grant number (No.152102310058), the National Natural Science Foundation of China grant number (No 81530037) and the China Scholarship Council (to KL).

Competing interests None declared.

Patient consent for publication Obtained.

Ethics approval All procedures performed in studies involving human participants were in accordance with the ethical standards of the Committee on Publication Ethics (COPE) and the retrospective cohort study was approved by the Ethics Committee of the First Affiliated Hospital of Zhengzhou University.

Provenance and peer review Not commissioned; externally peer reviewed.

Data sharing statement No additional data are available.

Open access This is an open access article distributed in accordance with the Creative Commons Attribution Non Commercial (CC BY-NC 4.0) license, which permits others to distribute, remix, adapt, build upon this work non-commercially, and license their derivative works on different terms, provided the original work is properly cited, appropriate credit is given, any changes made indicated, and the use is non-commercial. See: <http://creativecommons.org/licenses/by-nc/4.0/>.

REFERENCES

- Gayathri K, Ramalingam PK, Santhakumar R, *et al*. Cerebral sinus venous thrombosis as a rare complication of primary varicella zoster virus infection. *J Assoc Physicians India* 2016;64:74–6.
- Stam J. Thrombosis of the cerebral veins and sinuses. *N Engl J Med* 2005;352:1791–8.
- Coutinho JM, Zuurbier SM, Aramideh M, *et al*. The incidence of cerebral venous thrombosis: a cross-sectional study. *Stroke* 2012;43:3375–7.
- Devasagayam S, Wyatt B, Leyden J, *et al*. Cerebral venous sinus thrombosis incidence is higher than previously thought: a retrospective population-based study. *Stroke* 2016;47:2180–2.
- Ferro JM, Bacelar-Nicolau H, Rodrigues T, *et al*. Risk score to predict the outcome of patients with cerebral vein and dural sinus thrombosis. *Cerebrovasc Dis* 2009;28:39–44.
- Vidale S, Consoli A, Arnaboldi M, *et al*. Postischemic inflammation in acute stroke. *J Clin Neurol* 2017;13:1–9.
- Akboga YE, Bektas H, Anlar O, *et al*. Usefulness of platelet to lymphocyte and neutrophil to lymphocyte ratios in predicting the presence of cerebral venous sinus thrombosis and in-hospital major adverse cerebral events. *J Neurol Sci* 2017;380:226–9.
- Artoni A, Abbattista M, Bucciarelli P, *et al*. Platelet to lymphocyte ratio and neutrophil to lymphocyte ratio as risk factors for venous thrombosis. *Clin Appl Thromb Hemost* 2018;24:808–14.
- Lee JH, Kwon KY, Yoon SY, *et al*. Characteristics of platelet indices, neutrophil-to-lymphocyte ratio and erythrocyte sedimentation rate compared with C reactive protein in patients with cerebral infarction: a retrospective analysis of comparing haematological parameters and C reactive protein. *BMJ Open* 2014;4:e006275.
- Meng R, Wang X, Hussain M, *et al*. Evaluation of plasma D-dimer plus fibrinogen in predicting acute CVST. *Int J Stroke* 2014;9:166–73.
- Talbot K, Wright M, Keeling D, *et al*. Normal d-dimer levels do not exclude the diagnosis of cerebral venous sinus thrombosis. *J Neurol* 2002;249:1603–4.
- Liesz A, Suri-Payer E, Veltkamp C, *et al*. Regulatory T cells are key cerebroprotective immunomodulators in acute experimental stroke. *Nat Med* 2009;15:192–9.
- ElAli A, Jean LeBlanc N. The role of monocytes in ischemic stroke pathobiology: new avenues to explore. *Front Aging Neurosci* 2016;8:29.
- Li P, Mao L, Zhou G, *et al*. Adoptive regulatory T-cell therapy preserves systemic immune homeostasis after cerebral ischemia. *Stroke* 2013;44:3509–15.
- Kwon BS, Jeong DH, Byun JM, *et al*. Prognostic value of preoperative lymphocyte-monocyte ratio in patients with ovarian clear cell carcinoma. *J Cancer* 2018;9:1127–34.
- Mano Y, Yoshizumi T, Yugawa K, *et al*. Lymphocyte-to-monocyte ratio is a predictor of survival after liver transplantation for hepatocellular carcinoma. *Liver Transpl* 2018;9:147–9.
- Ji H, Li Y, Fan Z, *et al*. Monocyte/lymphocyte ratio predicts the severity of coronary artery disease: a syntax score assessment. *BMC Cardiovasc Disord* 2017;17:90.
- Kiris T, Çelik A, Varış E, *et al*. Association of Lymphocyte-to-monocyte Ratio with the mortality in patients with ST-Elevation myocardial infarction who underwent primary percutaneous coronary intervention. *Angiology* 2017;68:707–15.
- Ren H, Liu X, Wang L, *et al*. Lymphocyte-to-Monocyte Ratio: A Novel Predictor of the Prognosis of Acute Ischemic Stroke. *J Stroke Cerebrovasc Dis* 2017;26:2595–602.
- Park MG, Kim MK, Chae SH, *et al*. Lymphocyte-to-monocyte ratio on day 7 is associated with outcomes in acute ischemic stroke. *Neurol Sci* 2018;39:243–9.
- Furie KL, Kasner SE, Adams RJ, *et al*. Guidelines for the prevention of stroke in patients with stroke or transient ischemic attack: a guideline for healthcare professionals from the american heart association/american stroke association. *Stroke* 2011;42:227–76.
- Siddiqi SA, Nishat S, Kanwar D, *et al*. Cerebral venous sinus thrombosis: association with primary varicella zoster virus infection. *J Stroke Cerebrovasc Dis* 2012;21:917.e1–917.e4.
- Goeijenbier M, van Wissen M, van de Weg C, *et al*. Review: viral infections and mechanisms of thrombosis and bleeding. *J Med Virol* 2012;84:1680–96.
- Karsy M, Harmer JR, Guan J, *et al*. Outcomes in adults with cerebral venous sinus thrombosis: a retrospective cohort study. *J Clin Neurosci* 2018;53:34–40.
- Bunce PE, High SM, Nadjafi M, *et al*. Pandemic H1N1 influenza infection and vascular thrombosis. *Clin Infect Dis* 2011;52:e14–e17.
- Visseren FL, Verkerk MS, Bouter KP, *et al*. Interleukin-6 production by endothelial cells after infection with influenza virus and cytomegalovirus. *J Lab Clin Med* 1999;134:623–30.
- Prass K, Meisel C, Höflich C, *et al*. Stroke-induced immunodeficiency promotes spontaneous bacterial infections and is mediated by sympathetic activation reversal by poststroke T helper cell type 1-like immunostimulation. *J Exp Med* 2003;198:725–36.
- Prass K, Braun JS, Dirnagl U, *et al*. Stroke propagates bacterial aspiration to pneumonia in a model of cerebral ischemia. *Stroke* 2006;37:2607–12.
- Haeusler KG, Schmidt WU, Föhring F, *et al*. Cellular immunodepression preceding infectious complications after acute ischemic stroke in humans. *Cerebrovasc Dis* 2008;25:50–8.
- Vogelgesang A, Grunwald U, Langner S, *et al*. Analysis of lymphocyte subsets in patients with stroke and their influence on infection after stroke. *Stroke* 2008;39:237–41.
- Zhu JY, Liu CC, Wang L, *et al*. Peripheral blood lymphocyte-to-monocyte ratio as a prognostic factor in advanced epithelial ovarian cancer: a multicenter retrospective study. *J Cancer* 2017;8:737–43.



32. Song W, Tian C, Wang K, *et al*. The pretreatment lymphocyte to monocyte ratio predicts clinical outcome for patients with hepatocellular carcinoma: A meta-analysis. *Sci Rep* 2017;7:46601.
33. Eo W, Kim HB, Lee YJ, *et al*. Preoperative Lymphocyte-monocyte ratio is a predictor of suboptimal cytoreduction in Stage III-IV epithelial ovarian cancer. *J Cancer* 2016;7:1772–9.
34. Zhang H, Lu J, Lu Y, *et al*. Prognostic significance and predictors of the system inflammation score in ovarian clear cell carcinoma. *PLoS One* 2017;12:e0177520.
35. Supoken A, Kleebkaow P, Chumworathayi B, *et al*. Elevated preoperative platelet to lymphocyte ratio associated with decreased survival of women with ovarian clear cell carcinoma. *Asian Pac J Cancer Prev* 2014;15:10831–6.
36. Yong-Jun W. Cerebral vein and dural sinus thrombosis: clinical features, prognosis and predictive models. *Chin J Stroke* 2014;7:564–70.