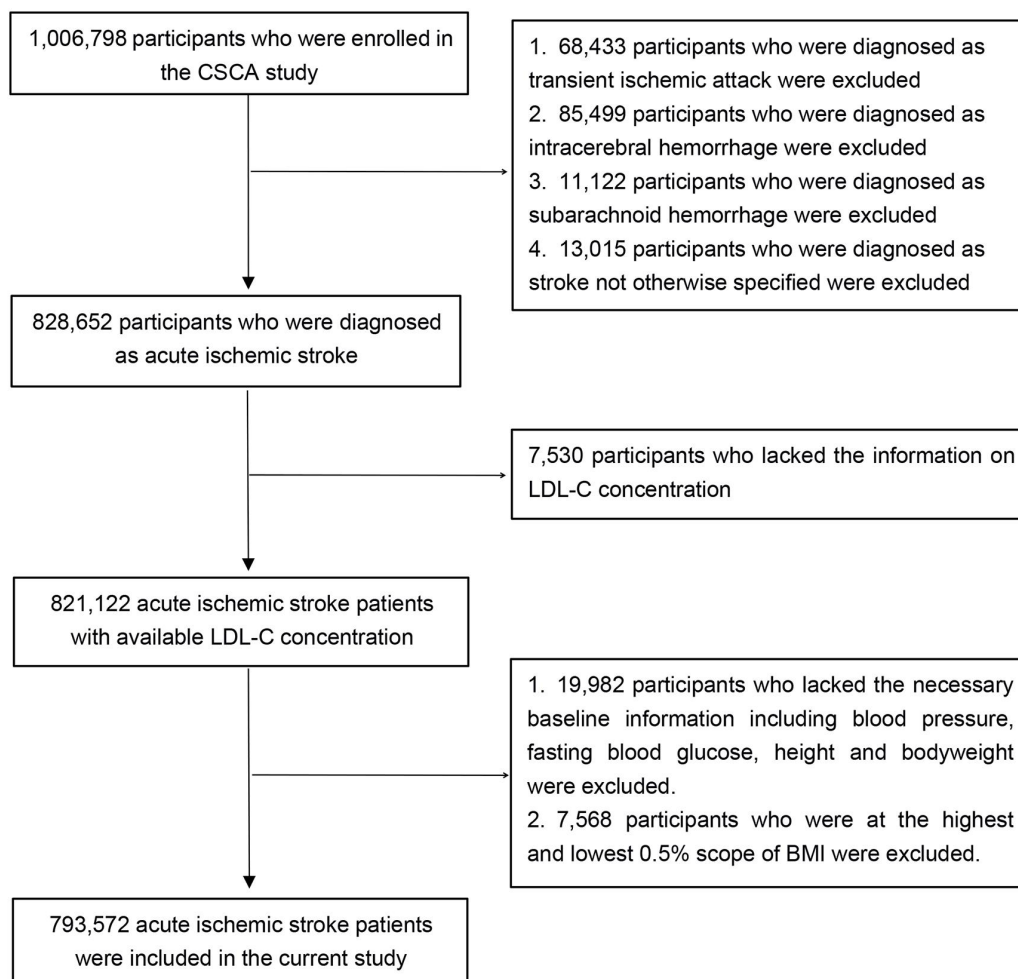


Supplemental figure 1. Study flowchart

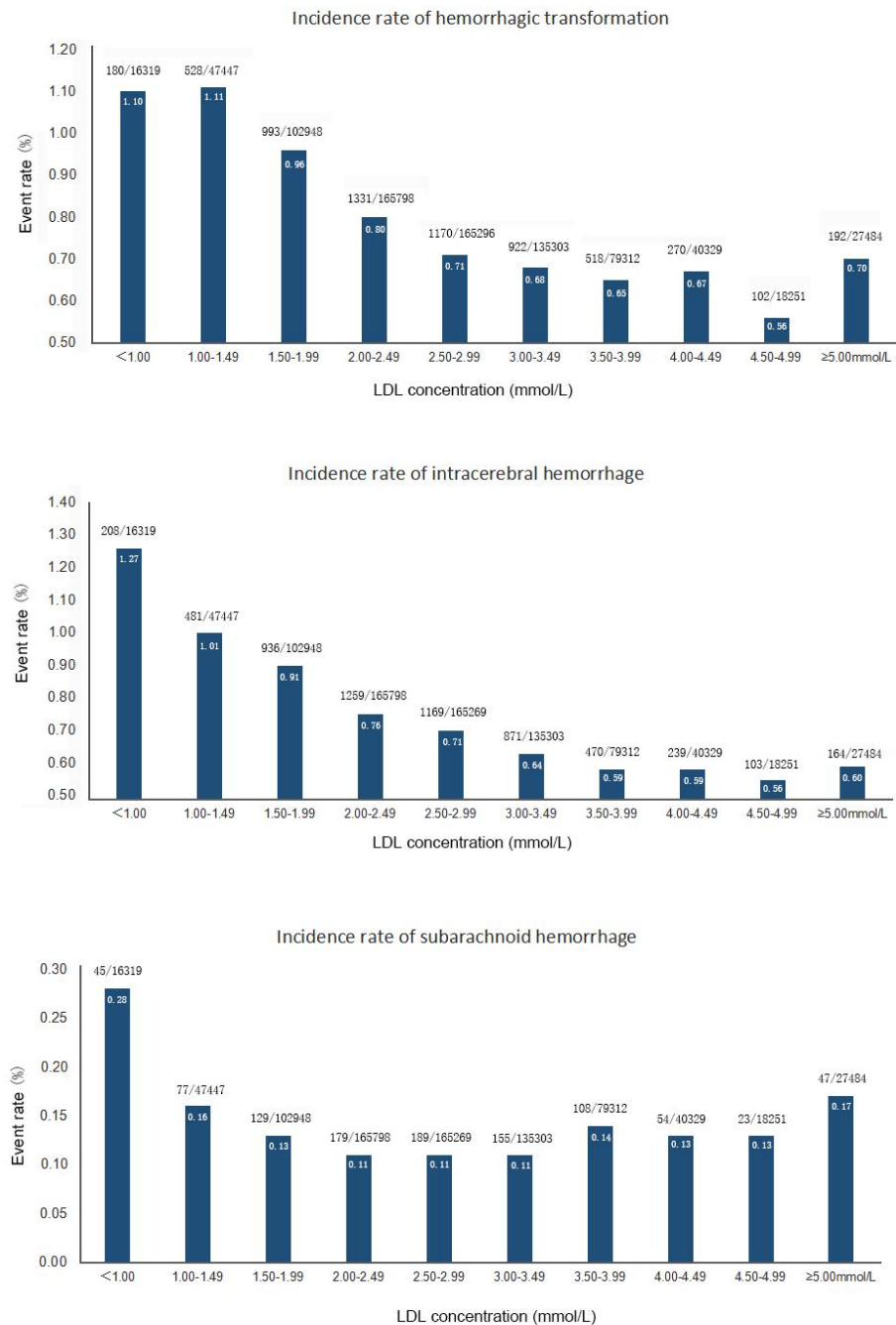
Abbreviations: CSCA, China Stroke Center Alliance; LDL-C, low density lipoprotein cholesterol;

BMI, body mass index.



Supplemental figure 2. Event rates of hemorrhagic transformation, intracerebral hemorrhage and subarachnoid hemorrhage across per 0.5mmol/L of LDL-C

Abbreviations: LDL-C, low density lipoprotein cholesterol.



Supplemental figure 3. Odds ratios and 95% confidence intervals of hemorrhagic transformation, intracerebral hemorrhage and subarachnoid hemorrhage according to different LDL-C levels

Adjusted for age, sex, smoking, alcohol intake, NIHSS (0-4; 5-15; 16-20; 21-42; missing NIHSS); medical history (hypertension; diabetes mellitus); history of anticoagulation; dual antiplatelet therapy; SBP (per 20mmHg); fasting glucose; IV thrombolytic therapy; BMI, kg/m² (<18.5, 18.5-25, 25-30, ≥30).

Abbreviations: OR, Odds Ratio; CI, confidence interval; LDL-C, low density lipoprotein cholesterol.

