

Risk factors of haemorrhagic transformation for acute ischaemic stroke in Chinese patients receiving intravenous recombinant tissue plasminogen activator: a systematic review and meta-analysis

Yijia Guo, Yaqiong Yang, Muke Zhou, Li He

To cite: Guo Y, Yang Y, Zhou M, *et al.* Risk factors of haemorrhagic transformation for acute ischaemic stroke in Chinese patients receiving intravenous recombinant tissue plasminogen activator: a systematic review and meta-analysis. *Stroke and Vascular Neurology* 2018;**0**: e000141. doi:10.1136/svn-2018-000141

MZ and LH contributed equally.

Received 2 January 2018
Revised 27 February 2018
Accepted 22 March 2018



Department of Neurology,
West China Hospital, Sichuan
University, Chengdu, China

Correspondence to
Dr Muke Zhou;
zmkemail@126.com and
Dr. Li He;
heli2003new@126.com

ABSTRACT

Objective To identify risk factors for haemorrhagic transformation in Chinese patients with acute ischaemic stroke treated with recombinant tissue plasminogen activator.

Methods We searched electronic databases including PubMed, EMBASE, CNKI and WanFang Data for studies reporting risk factors of haemorrhagic transformation after intravenous thrombolysis. Pooled OR, weighted mean difference (WMD) and 95% CI were estimated. Meta-analysis was performed by using Stata V.14.0 software.

Results A total of 14 studies were included. The results indicated that older age (WMD=3.46, 95% CI 2.26 to 4.66, $I^2=47$), atrial fibrillation (OR 2.66, 95% CI 1.85 to 3.81, $I^2=28$), previous stroke (OR 1.68, 95% CI 1.08 to 2.60, $I^2=14$), previous antiplatelet treatment (OR 1.67, 95% CI 1.17 to 2.38, $I^2=0$), higher National Institute of Health stroke scale scores (OR 1.10, 95% CI 1.05 to 1.15, $I^2=36$), systolic (WMD=4.75, 95% CI 2.50 to 7.00, $I^2=42$) or diastolic (WMD=2.67, 95% CI 1.08 to 4.26, $I^2=35$) pressure, and serum glucose level (WMD=1.44, 95% CI 0.62 to 2.26, $I^2=66$) were associated with increased risk of post-thrombolysis haemorrhagic transformation.

Conclusion The current meta-analysis identified eight risk factors for post-thrombolysis haemorrhagic transformation in Chinese patients with acute ischaemic stroke. Given the risk of bias, these results should be explained with caution and do not justify withholding intravenous thrombolysis.

INTRODUCTION

Intravenous recombinant tissue plasminogen activator (rt-PA) treatment is an effective therapy for acute ischaemic stroke.¹ However, the data from the Chinese National Stroke Registry indicated that there were only 1.6% patients who received rt-PA treatment in China.² One of the main reasons for withholding rt-PA therapy is fear of haemorrhagic transformation (HT), which may increase the risk of poor and fatal outcome.^{3,4} According to the National Institute of Neurological

Disorders and Stroke (NINDS) definition,⁵ the incidence rate of symptomatic intracranial haemorrhage is 2.2% to 8% across the world and 4.87% to 7.3% in China.⁶ Compared with patients from Western population, Asian patients may have a higher risk of intracranial haemorrhage,⁷⁻⁹ but the present evidence mostly comes from Japanese patients.^{7,8} In this study, we systematically reviewed the thrombolysis implementation in Chinese patients with acute ischaemic stroke and perform a meta-analysis to identify risk factors associated with HT.

METHODS

Search strategy

The common evidence medicine framework PICO (Patient population, Intervention/Exposure, Control, Outcome) was used to specify our research question: Did Chinese patients with acute ischaemic stroke receiving intravenous thrombolysis (patient population) accompanied with any risk factors (exposure) have a greater risk of HT (outcome) than those patients without (control)? The systematic review and meta-analysis was prepared following the preferred reporting items for systematic reviews and meta-analyses (PRISMA).¹⁰ Because no prior review protocol specifically exists to address this question, a search of titles and abstracts of published journal articles in PubMed, EMBASE, CNKI and Wanfang Data database (from 1 February 2010 to 1 November 2017) was conducted without language restriction. Search terms included 'ischaemic stroke or cerebral infarction or brain infarction' and 'thrombolysis or thrombolytic or tissue plasminogen activator

or alteplase' and 'haemorrhage or haemorrhagic transformation or bleeding' and 'risk factor or relevant factor or correlative factor or predictive factor' and 'China or Chinese'.

Eligibility criteria

Included studies met the following criteria: (1) retrospective or prospective design, and cohort or case-control studies; (2) thrombolysis treatment within 4.5 hours of stroke onset conformed to Chinese acute ischaemic stroke diagnosis and treatment guideline and the study protocol specifies the dosage of 0.9 mg rt-PA per kilogram; (3) risk factors for haemorrhagic transformation in patients following rt-PA. Exclusion studies were (1) stroke onset to needle time >4.5 hours or unknown, (2) using urokinase thrombolysis, (3) measure outcome including extracranial haemorrhage events, (4) bridging endovascular therapy, (5) reviews and abstracts, and (6) data could not be extracted from the studies.

Data extraction

A standardised data collection sheet was used to extract all data. Disagreements were solved by consensus. Two authors independently went through each eligible study and extracted the following information: first author, year of publication, study design, study location, sample size, patients' baseline characteristics and risk factors. The definition of haemorrhagic transformation is according to the NINDS criteria.⁵ The risk of bias was assessed by the Newcastle-Ottawa scale (NOS).¹¹

Statistical analysis

Risk factors of interest reported in at least five studies¹² were extracted for meta-analysis. Pooled ORs for categorical data, weighted mean differences (WMDs) for continuous data and 95% CI were estimated. Heterogeneity among studies was assessed by I^2 test. A fixed-effects model was applied when $I^2 < 50\%$. When existing statistical heterogeneity measured by $I^2 > 50\%$, a random-effects model was performed. Funnel plots and Begg's linear regression test were used to evaluate publication bias. A prespecified sensitivity analysis was performed by omitting one single study in each turn. Meta-regression was used to estimate the impact of sample size on the statistical results. All analyses were conducted using the Stata software package (V.14.0; Stata, College Station, Texas, USA). Statistical significance was set as p value < 0.05 .

RESULTS

Study selection and characteristic

The literature search and screening process are shown in the flow diagrams (figure 1). A total of 504 citations were identified. Of these, 450 citations were eliminated by reviewing title or abstract, and the remaining 54 studies to be reviewed in full-text article. Of the 54 studies, 40 were excluded for not fulfilling the eligibility criteria. Finally, 14 studies^{6,13–25} including a total of 2548 participants were

pooled into meta-analysis. Table 1 depicts the study characteristics and quality assessment.

Meta-analysis for risk factors

Demographic factors

Age and gender have been reported as potential risk factors for HT in included studies. A total of 14 studies evaluated age and gender as possible risk factors. The results of meta-analysis found older age (WMD=3.46, 95% CI 2.26 to 4.66, $I^2=47$) was associated with an increased risk of HT, and gender (OR 0.95, 95% CI 0.76 to 1.18, $I^2=0$) was not associated with HT.

Vascular risk factors

Six potential risk factors including hypertension, diabetes, hyperlipaemia, atrial fibrillation, previous stroke and smoking were evaluated in included studies. The meta-analysis demonstrated that atrial fibrillation (OR 2.66, 95% CI 1.85 to 3.81, $I^2=28$) and previous stroke (OR 1.68, 95% CI 1.08 to 2.60, $I^2=14$) were significantly associated with HT.

Previous antiplatelet treatment

A total of nine studies investigated the association between previous antiplatelet drugs and the risk of HT. Meta-analysis indicated that previous antiplatelet treatment (OR 1.67, 95% CI 1.17 to 2.38, $I^2=0$) was associated with an increased risk of HT.

Stroke severity

A total of eight studies reported adjusted OR of initial National Institute of Health stroke scale (NIHSS). The result of meta-analysis suggesting higher NIHSS scores (OR 1.10, 95% CI 1.05 to 1.15, $I^2=36$) was associated with an increased risk of HT.

Blood pressure and serum glucose level on admission

Systolic pressure, diastolic pressure and serum glucose level were investigated in several included studies. Meta-analysis showed higher systolic pressure (WMD=4.75, 95% CI 2.50 to 7.00, $I^2=42$), diastolic pressure (WMD=2.67, 95% CI 1.08 to 4.26, $I^2=35$) and serum glucose level (WMD=1.11, 95% CI 0.07 to 2.16, $I^2=83$) were significantly associated with HT.

Sensitivity analysis and meta-regression

We conducted a sensitivity analysis by excluding every single study to explore the stability of the combined results. The range of the combined ORs or WMDs for potential risk factors is shown in table 2. To explore the origin of heterogeneity between studies that investigated serum glucose, we pooled the effect size using random-effects model after excluding Li's study,¹⁸ with a reduction of heterogeneity ($I^2=66\%$). The association between identified risk factors and HT is shown in figure 2. Meta-regression (table 3) was performed to detect the impact of sample size on combined ORs or WMDs, and the findings demonstrated no statistical significance (all $p > 0.05$).

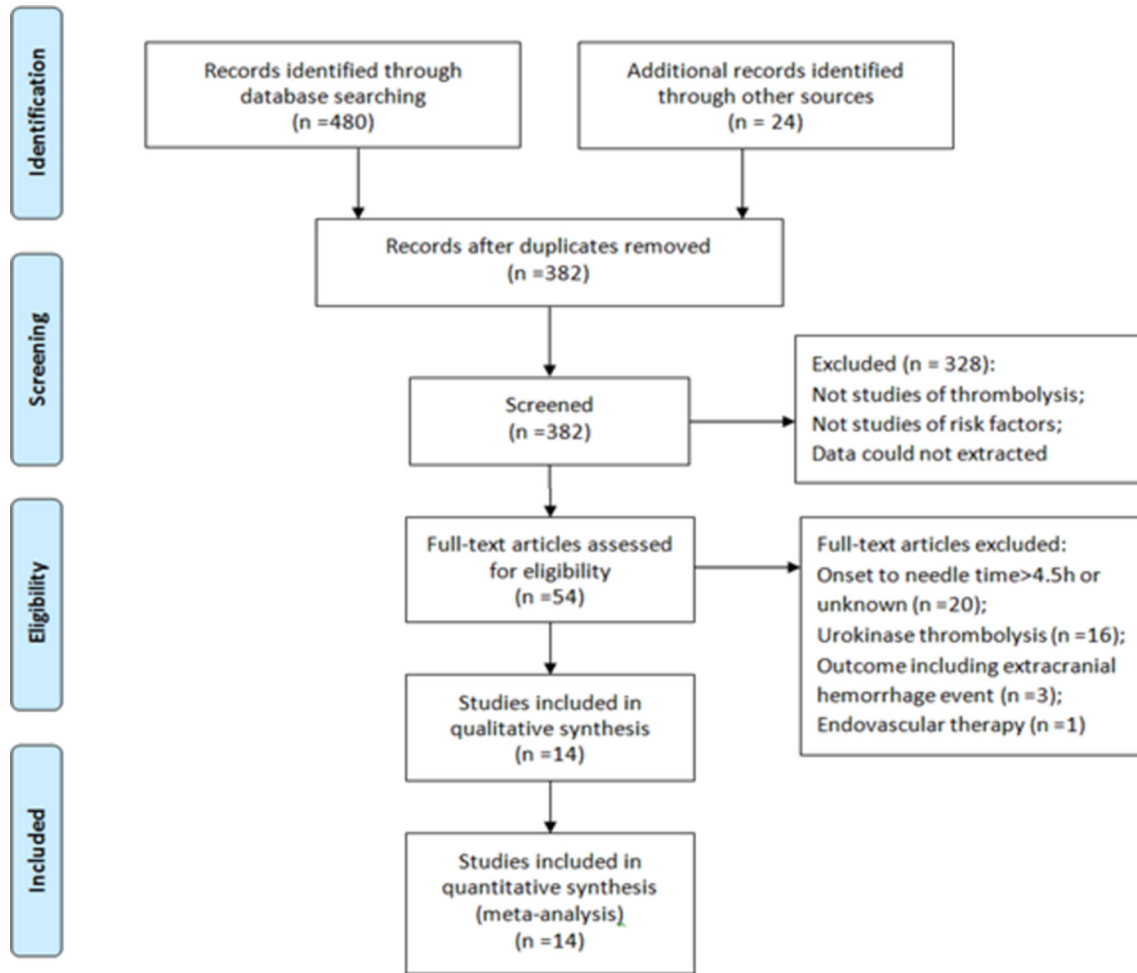


Figure 1 Preferred reporting items for systematic reviews and meta-analyses diagram and study identification.

Publication bias

The funnel plot was performed to assess the publication bias for the gender that had been investigated in 14 studies. The visual inspection of the funnel plot and Begg's test ($p=0.155$) indicated no evidence of publication bias.

DISCUSSION

The systematic review and meta-analysis demonstrated that eight risk factors were significantly associated with HT in Chinese patients with acute ischaemic stroke treated with rt-PA. We used NOS for quality assessment of case-control or cohort studies in the current meta-analysis. As we could see in [table 1](#), the scores of all included studies were no less than 6 in the quality assessment, which would help judging the reliability of the results.

HT following intravenous thrombolysis in patients with stroke is one of the complications that clinicians were reluctant to witness. For identifying patients with high risk of HT, several prognostic scores have been proposed to apply in clinical setting,²⁶ including Multicenter Stroke Survey (MSS) score,²⁷ Hemorrhage After Thrombolysis (HAT) score,²⁸ baseline blood sugar, Early infarct signs, (hyper) Dense cerebral artery sign, Age, NIH Stroke Scale (SEDAN) score,²⁹ Glu, Race, Age, Sex, systolic blood Pressure, stroke

Severity (GRASPS) score,⁹ Safe Implementation of Treatments in Stroke score³⁰ and Stroke Prognostication using Age and NIH Stroke Scale (SPAN)-100.³¹ In these models developed based on Western population, age,^{9,27,29-31} NIHSS score,^{9,27-31} blood glucose or diabetes,^{9,27-30} demographic characteristics^{9,30} (race, gender, weight), hypertension or systolic blood pressure,^{9,30} platelet account,²⁷ previous antiplatelet medication,^{30,32} onset to treatment time³⁰ and early CT signs^{28,29} are identified items with favourable prediction for HT. In the present study based on Chinese population, the results of meta-analysis and included studies demonstrated risk factors for HT after rt-PA containing age,^{6,13,14,19} NIHSS score,^{6,13,15-17,21,22} systolic^{17,18} or diastolic pressure,^{16,19} serum glucose level^{14,21,24,25} and previous antiplatelet treatment. In addition, the present study also detected the risk factor of atrial fibrillation^{14,15,18,20,21,23} or previous stroke history was associated with increased risk of HT. The I^2 test indicated that most pooled effect sizes were with favourable heterogeneity except serum glucose level. After excluding Li's study,¹⁸ a moderate heterogeneity ($I^2=66\%$) was still found when estimating the association between HT and glucose level on admission. We speculated that the heterogeneity originated from the variability within studies. A systemic review³³ reported that the prevalence of

Table 1 Characteristics of included studies and quality assessment in the meta-analysis

Author	Publication year	Study location	Sample size	Included risk factors	NOS scores
Liu <i>et al</i> ⁶	2017	Multicentre	1128	(1), (2), (3), (4), (9), (10), (11), (12), (13), (14)	8
Xu <i>et al</i> ¹³	2017	Shanghai	162	(1), (2), (3), (4), (6), (7), (8), (9), (10), (11), (14)	7
Shang <i>et al</i> ¹⁴	2017	Beijing	124	(1), (2), (3), (4), (5), (6), (7), (8), (9), (10), (11), (12), (13), (14)	6
Wu <i>et al</i> ¹⁵	2017	Hebei	87	(1), (2), (3), (4), (5), (6), (7), (8), (10), (11)	6
Li ¹⁶	2017	Hunan	69	(1), (2), (3), (4), (6), (7), (9), (10), (11), (12), (13), (14)	6
Wang <i>et al</i> ¹⁷	2016	Jiangsu	294	(1), (2), (3), (4), (5), (6), (8), (9), (10), (11), (12), (13), (14)	6
Li ¹⁸	2016	Hebei	176	(1), (2), (3), (4), (6), (7), (8), (10), (11), (12), (14)	8
Chen <i>et al</i> ¹⁹	2016	Zhejiang	122	(1), (2), (3), (4), (5), (6), (7), (8), (9), (10), (11), (12), (13), (14)	8
Li <i>et al</i> ²⁰	2015	Hubei	60	(1), (2), (3), (4), (5), (6), (7), (11), (12), (13), (14)	6
Xu <i>et al</i> ²¹	2015	Jiangsu	55	(1), (2), (3), (4), (6), (7), (8), (10), (11), (12), (13), (14)	7
Zhao <i>et al</i> ²²	2015	Guangdong	36	(1), (2), (3), (4), (5), (6), (7), (8), (9), (11), (12), (13), (14)	7
Shen <i>et al</i> ²³	2013	Shanghai	103	(1), (2), (3), (4), (6), (8), (11), (12), (13)	6
You ²⁴	2013	Chongqing	65	(1), (2), (3), (4), (6), (7), (9), (10), (11), (12), (13), (14)	8
Su <i>et al</i> ²⁵	2013	Zhejiang	44	(1), (2), (3), (4), (7), (9), (10), (11), (12), (13), (14)	6

Included risk factors: (1) age, (2) gender, (3) hypertension, (4) diabetes, (5) hyperlipaemia, (6) atrial fibrillation, (7) previous stroke, (8) smoking, (9) previous antiplatelet treatment, (10) onset to needle time, (11) National Institute of Health stroke scale, (12) systolic pressure, (13) diastolic pressure, (14) serum glucose.
NOS, Newcastle-Ottawa scale.

Table 2 Heterogeneity and sensitivity analysis analysis of risk factors among included studies

Risk factors	Number of studies	HT	Non-HT	Statistic method	I ²	Pooled effect size	Sensitivity analysis	
						95% CI	Lower limit	Upper limit
Demographic factors								
Age	14	248	2300	I-V, fixed, WMD	47	3.46 (2.26 to 4.66)	2.86 (1.60 to 4.12)	3.98 (2.68 to 5.28)
Male	14	248	2300	M-H, fixed, COR	0	0.95 (0.76 to 1.18)	0.78 (0.29 to 2.13)	1.43 (0.45 to 5.88)
Vascular risk factors								
Hypertension	14	248	2300	M-H, fixed, COR	0	1.05 (0.85 to 1.30)	0.71 (0.22 to 2.30)	1.57 (0.69 to 3.57)
Diabetes	14	248	2300	M-H, fixed, COR	13	1.18 (0.87 to 1.61)	0.59 (0.07 to 5.20)	2.79 (1.08 to 7.22)
Hyperlipaemia	6	96	650	M-H, fixed, COR	0	1.10 (0.63 to 1.90)	1.03 (0.43 to 2.48)	1.36 (0.29 to 6.42)
Atrial fibrillation	12	176	1200	M-H, fixed, MOR	28	2.66 (1.85 to 3.81)	2.39 (1.65 to 3.46)	3.02 (2.05 to 4.45)
Previous stroke	11	142	790	M-H, fixed, COR	14	1.68 (1.08 to 2.60)	1.49 (0.92 to 2.41)	1.97 (1.21 to 3.23)
Smoking	9	142	1040	M-H, fixed, COR	0	1.09 (0.80 to 1.50)	0.46 (0.05 to 4.21)	1.43 (0.59 to 3.48)
Other risk factors								
Previous antiplatelet	9	188	1879	M-H, fixed, MOR	0	1.67 (1.17 to 2.38)	1.52 (1.04 to 2.22)	1.91 (1.24 to 2.97)
NIHSS	8	139	1040	I-V, random, AOR	36	1.10 (1.05 to 1.15)	1.09 (1.04 to 1.14)	1.12 (1.06 to 1.18)
Systolic pressure	12	220	2079	I-V, fixed, WMD	42	4.75 (2.50 to 7.00)	3.28 (0.77 to 5.78)	6.10 (3.55 to 8.66)
Diastolic pressure	11	207	1916	I-V, fixed, WMD	35	2.67 (1.08 to 4.26)	2.17 (0.51 to 3.82)	3.34 (1.43 to 5.26)
Serum glucose	10	204	2058	I-V, random, WMD	83	1.11 (0.07 to 2.16)	0.77(-0.19 to 1.73)	1.43 (0.62 to 2.26)
Serum glucose*	9	192	2001	I-V, random, WMD	66	1.44 (0.62 to 2.26)	1.01 (0.38 to 1.61)	1.66 (0.81 to 2.51)

*Effect size was calculated by excluding one single study.

AOR, adjusted OR; COR, crude OR; HT, haemorrhagic transformation; I-V, inverse variance; M-H, Mantel-Haenszel; MOR, mixed OR; NIHSS, National Institute of Health stroke scale; WMD, weighted mean difference.

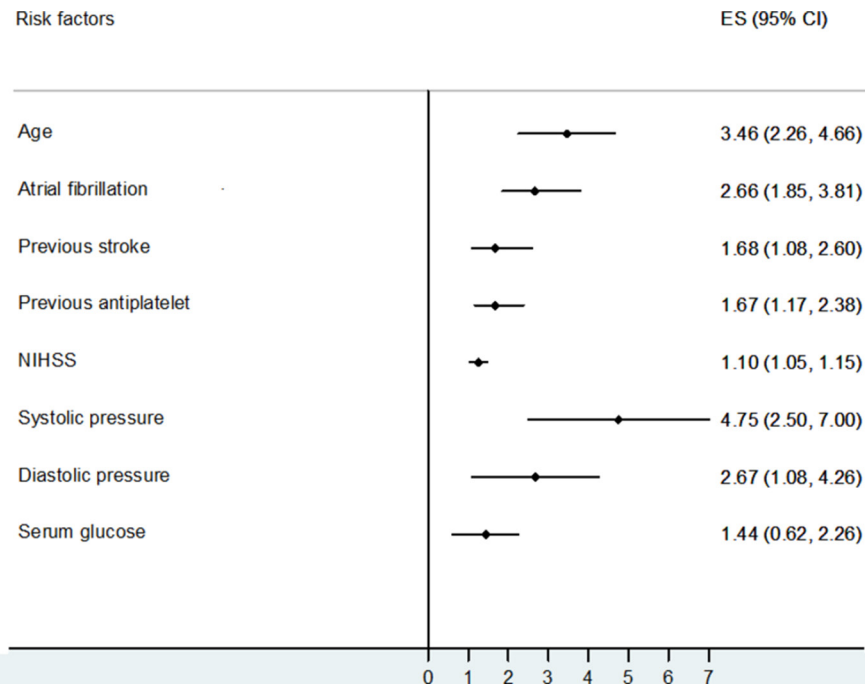


Figure 2 Risk factors for haemorrhagic transformation in patients with acute ischaemic stroke receiving recombinant tissue plasminogen activator. ES, effect size; NIHSS, National Institute of Health stroke scale.

hyperglycaemia ranged from 8% to 63% in patients with acute stroke, and the measurement method used in individual patients contains random or fasting serum glucose, which was not specified in the original literature. The individual difference between patients and measurement bias within studies may explain the original of heterogeneity.

Prior study⁹ identified higher risk of intracranial haemorrhage in Asian patients with acute ischaemic stroke treated with intravenous tissue-type PA. Although the mechanism is not fully understood, racial difference in intracranial atherosclerotic diseases or blood coagulation–fibrinolysis factors^{8,34} may account for the observational result. However, due to the limited data extracted by included studies in this secondary analysis, we failed to explore the association between other risk factors and the risk for HT. Recently, a meta-analysis³⁵ performed by Charidimou *et al* provided evidence between leukoaraiosis and increased risk of HT

after intravenous thrombolysis, which may direct early CT or MRI signs and risk for HT for future researches.

Several limitations should be considered in our study. First, the present meta-analysis included 14 cohort or case–control studies. Despite all study protocols that stated the implementation of 0.9mg rt-PA per kilogram recommended by Chinese guideline, selection bias within studies still exists due to the nature of observational design. Second, there were three different definitions of HT⁶ that have been proposed on the basis of established clinical trials in intravenous thrombolysis. To make a consistency in outcome measure of included studies, we used conservative NINDS criteria in the study. However, compared with other more strict criteria, the NINDS definition may overestimate the odds of HT and increase the risk of measurement bias. Third, we have to note that most studies included in the meta-analysis fail to distinguish the symptomatic intracranial

Table 3 Meta-regression for the impact of sample size on pooled results

Risk factors	Exp(b)	SE	t	p>t	95% CI	Adjusted R ² (%)
Age	1.07	0.21	0.36	0.723	0.71 to 1.61	–28.75
Atrial fibrillation	1.22	0.59	0.41	0.691	0.42 to 3.56	–53.25
Previous stroke	1.40	0.76	0.63	0.547	0.41 to 4.76	–50.87
Previous antiplatelet	1.86	0.88	1.30	0.234	0.60 to 5.71	0
NIHSS	1.12	0.11	1.20	0.277	0.89 to 1.39	0
Systolic pressure	0.93	0.24	–0.29	0.780	0.52 to 1.64	–15.01
Diastolic pressure	0.99	0.25	–0.05	0.959	0.56 to 1.75	–25.21
Serum glucose	5.64	6.12	1.59	0.155	0.43 to 73.43	17.55

NIHSS, National Institute of Health stroke scale.

haemorrhage and non-symptomatic intracranial haemorrhage in patients with HT, and a subgroup analysis for future study is needed to confirm these findings. Because of limitations mentioned above, the results of the current study should be explained with caution.

CONCLUSIONS

The systematic review and meta-analysis identified eight risk factors associated with a higher risk of HT, including age, atrial fibrillation, previous stroke, previous antiplatelet treatment, stroke severity, systolic or diastolic pressure, and serum glucose level. Given the risk of bias, these results should not justify withholding intravenous thrombolysis.

Acknowledgements We thank the authors and participants of the included studies for their important contributions.

Contributors YG designed the study, collected and extracted data, and drafted the manuscript. YY collected and extracted data. MZ revised manuscript critically for important intellectual content. LH approved of the version to be published.

Funding This work was supported by the National Natural Science Foundation of China (grant no. 81571153).

Competing interests None declared.

Patient consent Not required.

Provenance and peer review Not commissioned; externally peer reviewed.

Data sharing statement No additional data are available.

Open Access This is an Open Access article distributed in accordance with the Creative Commons Attribution Non Commercial (CC BY-NC 4.0) license, which permits others to distribute, remix, adapt, build upon this work non-commercially, and license their derivative works on different terms, provided the original work is properly cited and the use is non-commercial. See: <http://creativecommons.org/licenses/by-nc/4.0/>

© Article author(s) (or their employer(s) unless otherwise stated in the text of the article) 2018. All rights reserved. No commercial use is permitted unless otherwise expressly granted.

REFERENCES

1. Wardlaw JM, Murray V, Berge E, *et al.* Thrombolysis for acute ischaemic stroke. *Cochrane Database Syst Rev* 2014;Cd000213.
2. Liu L, Wang D, Wong KS, *et al.* Stroke and stroke care in China: huge burden, significant workload, and a national priority. *Stroke* 2011;42:3651–4.
3. Brown DL, Barsan WG, Lisabeth LD, *et al.* Survey of emergency physicians about recombinant tissue plasminogen activator for acute ischemic stroke. *Ann Emerg Med* 2005;46:56–60.
4. Strbian D, Sairanen T, Meretoja A, *et al.* Patient outcomes from symptomatic intracerebral hemorrhage after stroke thrombolysis. *Neurology* 2011;77:341–8.
5. Kwiatkowski TG, Libman RB, Frankel M, *et al.* Effects of tissue plasminogen activator for acute ischemic stroke at one year. *N Engl J Med Overseas Ed* 1999;340:1781–7.
6. Liu M, Pan Y, Zhou L, *et al.* Predictors of post-thrombolysis symptomatic intracranial hemorrhage in Chinese patients with acute ischemic stroke. *PLoS One* 2017;12:e0184646.
7. van Asch CJ, Luitse MJ, Rinkel GJ, *et al.* Incidence, case fatality, and functional outcome of intracerebral haemorrhage over time, according to age, sex, and ethnic origin: a systematic review and meta-analysis. *Lancet Neurol* 2010;9:167–76.
8. Ueshima S, Matsuo O. The differences in thrombolytic effects of administered recombinant t-PA between Japanese and Caucasians. *Thromb Haemost* 2002;87:544–6.
9. Menon BK, Saver JL, Prabhakaran S, *et al.* Risk score for intracranial hemorrhage in patients with acute ischemic stroke treated with intravenous tissue-type plasminogen activator. *Stroke* 2012;43:2293–9.
10. Moher D, Liberati A, Tetzlaff J, *et al.* Preferred reporting items for systematic reviews and meta-analyses: the PRISMA statement. *BMJ* 2009;339:b2535.
11. Stang A. Critical evaluation of the Newcastle-Ottawa scale for the assessment of the quality of nonrandomized studies in meta-analyses. *Eur J Epidemiol* 2010;25:603–5.
12. Zhang J, Zhao T, Long S, *et al.* Risk factors for postoperative infection in Chinese lung cancer patients: a meta-analysis. *J Evid Based Med* 2017;10:255–62.
13. Xu X, Li C, Wan T, *et al.* Risk factors for hemorrhagic transformation after intravenous thrombolysis in acute cerebral infarction: a retrospective single-center study. *World Neurosurg* 2017;101:155–60.
14. Shang JY, Xf L, Zhao H, *et al.* Analysis of related factors of hemorrhagic transformation after intravenous thrombolytic therapy with alteplase in patients with acute cerebral infarction. *Journal of Guangxi Medical University* 2017;34:1009–12.
15. Wu LJ, Li ZW, Kong YM, *et al.* Clinical analysis of 89 cases of acute ischemic stroke who accepted rt-PA intravenous thrombolysis. *Journal of Hebei Medical University* 2017;38:386–94.
16. Li YP. Relevant factors analysis of intravenous thrombolysis in intracerebral hemorrhage transformation after acute cerebral infarction. *Chin J of Clinical Rational Drug Use* 2017;10:24–6.
17. Wang C, Chen GF, Liu WW, *et al.* Analysis of related risk factors of hemorrhagic transformation in patients with cerebral infarction and thrombolysis. *Chin J Clinicians* 2016;10:3198–202.
18. Li H. *Analysis of rt-PA intravenous thrombolysis for acute ischemic stroke clinical prognostic factors*. Hebei: Master thesis, North China University of Science and Technology, 2016.
19. Chen S, Lu X, Zhang W, *et al.* Does prior antiplatelet treatment increase the risk of hemorrhagic transformation and unfavorable outcome on day 90 after intravenous thrombolysis in acute ischemic stroke patients? *J Stroke Cerebrovasc Dis* 2016;25:1366–70.
20. Li M, Hh L, Luo WJ, *et al.* Risk factors and prognosis of the hemorrhagic transformation following thrombolysis in cerebral ischemia. *Neural Injury And Functional Reconstruction* 2015;10:484–7.
21. Xu YP, Sun YM, Liu CF. An analysis of factors related to hemorrhage transformation after intravenous alteplase thrombolysis in patients with acute cerebral infarction. *Jiangsu Medical Journal* 2015;41:2297–300.
22. Zhao YQ, Qiao LJ, Cai YF, *et al.* Risk factors for hemorrhagic transformation in patients with acute ischemic stroke treated with intravenous thrombolysis: a nested case-control study. *Guangdong Medical Journal* 2015;36:398–401.
23. Shen J, Bai QK, Zhao ZG, *et al.* Risk of intracerebral hemorrhage following multi-modality MRI-based intravenous thrombolytic therapy with rt-PA for acute cerebral infarction. *Journal of Apoplexy and Nervous Diseases* 2013;30:619–21.
24. You DX. *Clinical analysis of outcome after rt-PA thrombolysis of acute ischemic stroke in 65 patients*. Chongqing: Master thesis, Chong Qing Medical University, 2013.
25. Su LJ, Xu J, Xu HY. Clinical analysis of hemorrhagic transformation in ischemic stroke patients treated with intravenous thrombolysis. *Prevention and Treatment of Cardio-Cerebral-Vascular Disease* 2013;13:390–1.
26. Strbian D, Michel P, Seiffge DJ, *et al.* Symptomatic intracranial hemorrhage after stroke thrombolysis: comparison of prediction scores. *Stroke* 2014;45:752–8.
27. Cucchiara B, Tanne D, Levine SR, *et al.* A risk score to predict intracranial hemorrhage after recombinant tissue plasminogen activator for acute ischemic stroke. *J Stroke Cerebrovasc Dis* 2008;17:331–3.
28. Lou M, Safdar A, Mehdiratta M, *et al.* The HAT score: a simple grading scale for predicting hemorrhage after thrombolysis. *Neurology* 2008;71:1417–23.
29. Strbian D, Engelter S, Michel P, *et al.* Symptomatic intracranial hemorrhage after stroke thrombolysis: the SEDAN score. *Ann Neurol* 2012;71:634–41.
30. Mazya M, Egido JA, Ford GA, *et al.* Predicting the risk of symptomatic intracerebral hemorrhage in ischemic stroke treated with intravenous alteplase: Safe Implementation of Treatments in Stroke (SITS) symptomatic intracerebral hemorrhage risk score. *Stroke* 2012;43:1524–31.
31. Saposnik G, Guzik AK, Reeves M, *et al.* Stroke prognostication using age and NIH stroke scale: SPAN-100. *Neurology* 2013;80:21–8.
32. Luo S, Zhuang M, Zeng W, *et al.* Intravenous thrombolysis for acute ischemic stroke in patients receiving antiplatelet therapy: a systematic review and meta-analysis of 19 studies. *J Am Heart Assoc* 2016;5:e003242.
33. Capes SE, Hunt D, Malmberg K, *et al.* Stress hyperglycemia and prognosis of stroke in nondiabetic and diabetic patients: a systematic overview. *Stroke* 2001;32:2426–32.
34. Wong LK. Global burden of intracranial atherosclerosis. *Int J Stroke* 2006;1:158–9.
35. Charidimou A, Pasi M, Fiorelli M, *et al.* Leukoaraiosis, cerebral hemorrhage, and outcome after intravenous thrombolysis for acute ischemic stroke: a meta-analysis (v1). *Stroke* 2016;47:2364–72.